

iCreate

Aim
High

Learn the
WESTALL WAY


WESTALL
Secondary College

Westall Secondary College



CRICOS 00861K

www.westallsc.vic.edu.au

Welcome address from the Principal

“There are no secrets to success. Success is the result of preparation and hard work”. This is the attitude we try to instil in our students at Westall Secondary College. We want our students to be well prepared when they take on any challenge in life and that hard work is the only sure way to success in life. Our focus in Year 7 is to build sound habits in our students that will be the cornerstone of successfully completing VCE.

We want our students to receive the best educational opportunities and that is why we have a Bring Your Own Device program across the school, to make sure our students are immersed in the technology that is changing the way we all live.

Furthermore, our educational program is designed to identify areas of improvement and to respond quickly to our students’ needs so that by the time they reach VCE, we are confident that they have the skills and the knowledge to achieve great things.

Thank you for choosing Westall Secondary College as the place to educate your child.

You can be confident your child is in safe and experienced hands.

Tristan Lanarus

Principal



“We endeavour to find the perfect balance between the explicit teaching of key skills and giving the students the opportunity to follow their passions.”





Our Motto : Integrity and Service

We have High Expectations and Pride in our School Community

Our College Values:

Care for Yourself, Care for Others, Care for your Environment, Care for your Learning

College Curriculum Programs



Advanced learning program in every subject, Years 7-10. Where there is evidence that students are working **'above the expected level'**, teachers extend and advance these students so that they continue to maximize their potential.



iCreate is an elective program for all students in years 7-12 where, on Wednesdays, students have the opportunity to follow their passion and undertake a project-based elective program. As the classes are made up with students from a range of age groups, it is a great opportunity for students to integrate more fully into the Westall Learning Community.

Subjects include Aviation, Taekwondo, Outdoor Education, Visual Arts, STEM, Westall Café, #CODE, Singing, Dance and Drama, Sport, Kidpreneur, Construction & Technology and Study Centre.

For more information, visit www.icreatewestall.com

Senior School

At Westall Secondary College, we are committed to assisting students to achieve success in VCE or VCAL studies. Monash University and Community partnerships offer our students enhanced opportunities to pathways beyond secondary schooling.

Students in the Senior School are able to select from a wide range of VCE subjects, whilst students who wish to undertake a hands-on career, have the opportunity to undertake a VCAL course at the College. VET subjects are also on offer and students are able to participate in additional courses alongside their VCE or VCAL program.

The College has an excellent International Students Program with additional facilities and services provided to students who are studying way from home.

Co-curricula Programs:

- **Instrumental Music:** All Year 7 students are introduced to a musical instrument as part of the music course. Individual and group Instrumental Music lessons are offered to students at all year levels.
- **House Program:** The College conducts a range of activities (performing arts, sport and academia) in an active House program. Each student is allocated to a House and participation in house events is encouraged throughout the school year.
- **Inter school sports :** The college is active in inter school sport and offers the chance for students to participate in both team and individual sports. Westall Secondary College has been the recipient of many sporting Awards and is recognised for sporting excellence in sports, including Rugby, Volleyball and Netball.
- **Homework Club:** A structured homework club is offered for students every lunchtime as well as after school on Wednesdays. Additional support is provided in EAL and Maths to all International students.
- **Monash Access:** Westall Secondary College participates in the Monash Access program, with marked improvements in the pathway results of our students.
- **Camps and Excursions:** The College encourages student participation in excursions and camps which are planned at different times of the year for educational purposes.



"Our school values around 'CARE' are visible in everything we do and we want every student to be the best version of themselves".



“Westall Secondary College is committed to individual student achievement and excellence. Our philosophy is based on meeting the needs AND wants of our students; a perfect blend of explicit teaching and enquiry based learning”.



Scholarships and Awards

Scholarships are open to Grade 6 students in the areas of Academic Excellence, Art, Music, Sport and Community involvement. In the senior years, our students have access to Bursaries and scholarships through: The Skyline Foundation, Kwong Lee Dow Young Scholars, ADF, Caltex All Rounder, Monash University and others.

Leadership Opportunities

The College runs a number of Leadership programs including a Peer Support Program, Student Representative Council (SRC), School Leadership, House Leadership, Resilience Ambassadors.

The Student Representative Council also provides students with a voice in decision making and an opportunity to be actively involved in College matters.

Westall English Language Centre

The English Language Centre is on the same site as the College. New students to Australia have access to the Intensive English Language program and become familiar with the demands of the Australian Educational system from the time they arrive, without moving from one location to the next. The expert EAL teachers and the caring environment provided, greatly assist in the successful transition of all new students who enrol at our College.

Home stay and Accommodation

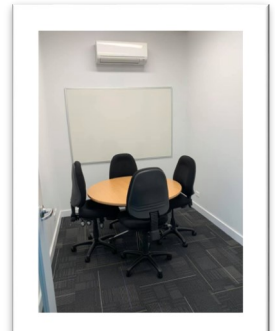
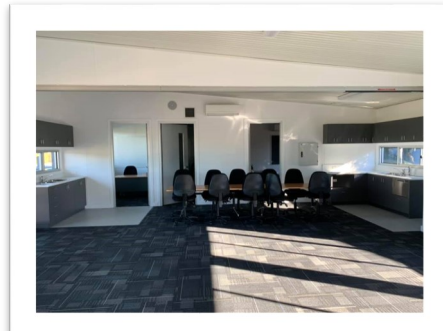
International students who require Homestay during their study at Westall Secondary College have access to a range of local families who can provide caring and supportive homes. The local community is multicultural and students are matched with the best possible homestay provider, based on individual preferences.

International Centre

The College has newly opened, dedicated facility, for the exclusive use by International Students. The International House is supervised by a full time International Student Coordinator, who is a Chinese speaker and additional support staff who speak Vietnamese, Cambodian and Thai.

Regular communication between the International Student Coordinator and the parents of the students is very reassuring for parents who reside overseas.

To enrich the experiences of students in Australia and to eliminate homesickness, there are many different activities organised for the International students. These activities include; birthday parties, Luna New Year Celebration, Mid Autumn Festival, Semester dinner and excursions to places of interest.



Location and special features

- The Westall Railway Station is directly opposite the College and regular public transport is available directly in front of the school.
- Monash University, Clayton Campus is in close proximity to the College.
- A housing estate of new –quality housing is opposite the College.
- Springvale and Clayton shopping centres are close by train.
- The Monash Medical Centre (one of the main hospitals in Melbourne) is very close to the College.
- Chinese and other Asian cuisine (shops and restaurants) are also very close to the College.



"We meet the needs of students by ensuring the learning is at the appropriate level for every student in every subject. Students are engaged in literacy and numeracy in a challenging manner to ensure that they are in their 'wobble zone' - not too easy and not too hard".



Contact Us

A: 88-128 Rosebank Avenue, Clayton South VIC 3169

P: (03) 9546 3233 **E:** info@westallsc.vic.edu.au **W:** www.westallsc.vic.edu.au

 @westallsecondary  @westallsc